



Very high efficacy explosion-proof linear LED luminaire.



Zone 1, Z1

CE 1418  II 2G Ex eb mb IIC T6 Gb

CE 1418  II 2D Ex tb IIIC T85°C Db

EU-type Examination Certificate nr.: BKI20ATEX0003 X

- prominently high luminaire efficacy, up to 143 lm/W
- 5 available beam angles
- can be ordered with DALI interface
- Zone 1 and Zone 21 certificate
- 3 different length: 664; 1039 and 1389 mm
- CRI>80

- 3 available CCT: 3000; 4000 and 5000K
- Samsung LED light source
- Tridonic LED driver
- high quality materials
- different available mounting accessories
- ideal for replacing traditional fluorescent luminaires

Type of luminaire	Ex Zone	Ex protection mode	Gas/Dust group	Power consumption	Luminous flux of luminaire*	Ex thermal class	Weight
ExProof Linear X3 Z1	Z1	eb/mb	IIC	25W	3450lm**	T6	5,2kg
ExProof Linear X6 Z1	Z1	eb/mb	IIC	50W	6900lm**	T6	7,6kg
ExProof Linear X8 Z1	Z1	eb/mb	IIC	65W	9200lm**	T6	10,85kg
ExProof Linear X3 Z21	Z21	tb	IIIC	25W	3450lm**	T85°C	5,2kg
ExProof Linear X6 Z21	Z21	tb	IIIC	50W	6900lm**	T85°C	7,6kg
ExProof Linear X8 Z21	Z21	tb	IIIC	65W	9200lm**	T85°C	10,85kg

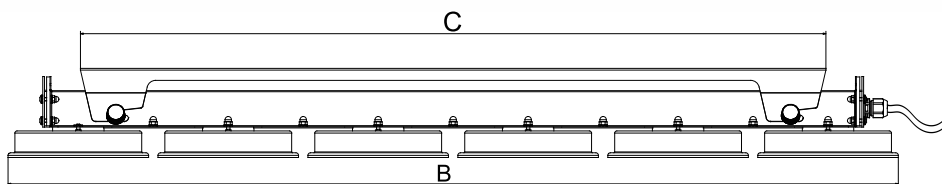
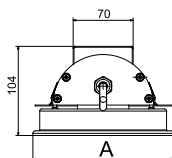
*the luminous flux depends on type of optics, CCT and CRI

** at ta=25°C ambient temperature

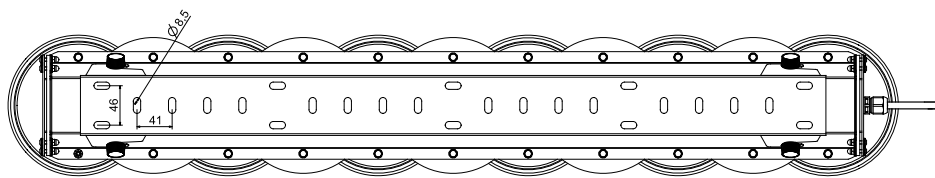
Made in Hungary

Kermann Technical Developer Co. Ltd.
Hungary, H-1149 Budapest, Angol str 32. 4th building 2nd floor

e-mail: kermann-ex@kermann-ex.com
www.kermann-ex.com



Dimension	A/mm	B/mm	C/mm
X3	172	664	470
X6	164	1039	870
X8	164	1389	1200



Maximal number of luminaires connected to 1 circuit breaker

Type of luminaire	Inrush current	max number of luminaires				
		Type	10A	13A	16A	20A
ExProof Linear X3	23,4A / 202 µs	B	13	17	21	27
		C	21	28	35	45
ExProof Linear X6	23,4A / 202 µs	B	13	17	21	27
		C	21	28	35	45
ExProof Linear X8	23,3A / 198 µs	B	12	16	20	26
		C	20	26	33	41

The maximum number of luminaires connected to 1 circuit breaker may differ depending on the certain type of the circuit breaker. In each individual case, get contact with the circuit breaker's manufacturer!



Linear X product line is equipped with LED light source. Thanks to the high quality design, the lifetime of the luminaire is very long, more than 50.000 hrs. The service costs are extremely low. The luminaire can be ordered with DALI interface. A universal mounting bracket is included with the luminaire, which enables easy mounting on ceiling. There are different available mounting accessories too, which permit of wall mounting, hanging or mounting on pipe bridges, lighting poles.

Nominal supply voltage:	220-240V AC 50/60Hz / 220V DC
Power factor:	>0,88
CCT	4000K
Optional CCT	3000K,5000K
CRI:	>80 CRI
Beam angles:	30°/60°/90°/120°/street
IP class:	IP 66
IK class:	IK 09
Dimming (optional):	DALI, DSI, switch DIM, corridor function
Electric protection:	CLASS I (protective earth)
Surface treatments:	Powder coating
Materials:	Aluminium, galvanized steel, PC
Lifetime:	>50 000 hrs
Ambient temperature:	-20°C - +50°C

The given information is for rough orientation only! In each individual case a lighting design is necessary! Subject to technical changes, misprints and errors.

Rev.:2021.02.